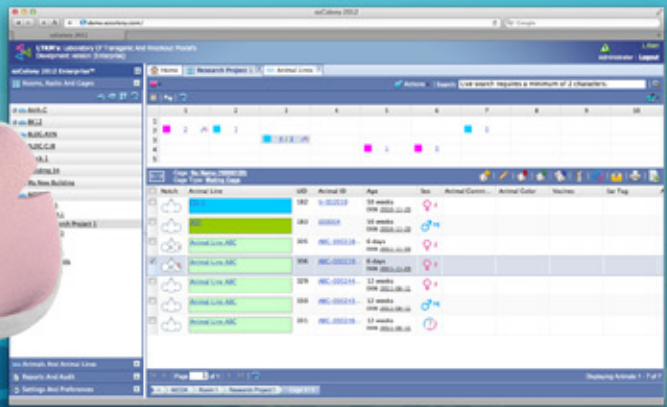




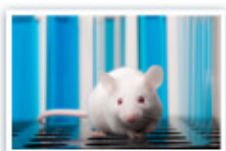
Transgenic Animal Colony at Your Fingertips



RURO introduces the best and most comprehensive transgenic animal and facility management with ezColony!

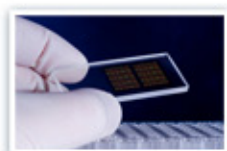
RURo
WWW.RURO.COM

ezColony® is setting the standard for automating the management of transgenic animal colonies for scientific and medical research as well as their facilities on nearly any scale.



Virtual Cages

Set up of virtual colony as it is in actual animal facility, with all rooms, racks, cages and animals.



Colony Events

Automatic notifications of various events in animal house



Animal Breeding

Flexible breeding setups



Identification

Various approaches for animal identification, including barcodes, RFIDs, and traditional ear clips and notches.

- With ezColony you will feel comfortable planning and designing experiments that derive, maintain, and archive lines of knockout and transgenic animals.
- Access and manage your animal resources anywhere in the world in a secure, fast, efficient, and user-friendly way.
- Rich, self-explanatory, state-of-the-art experience with a database that maintains, analyzes and optimizes any size colony in academic or industrial environments.
- Frequent updates to reflect current trends in animal facility operations and management and provide you with animal models and resources to assist with basic research, drug discovery and drug development.
- Follows best practices from the Guide for the Care and Use of Laboratory Animals.
- Helps meet the reporting requirement of the AALAS (American Association for Laboratory Animal Science) and ILAR (Institute for Laboratory Animal Research).
- Licensing of new drugs and biologicals (MCMs) using the FDA Animal Rule

ezColony® is available in an affordable, feature-rich Standard Edition and an Enterprise Edition that offers enhanced security and authentication that utilizes LDAP or Active Directory, no limits on the number of concurrent users and animals, support for sub-facilities and automated data backups for peace of mind.



ezColony® Standard

Animal management, facility management, pedigree, genograms and much, much more all powered by a visual, intuitive user interface.

ezColony provides the most comprehensive approach for managing and rationalizing the entire infrastructure of your animal house, including animal maintenance, supply management, resources, personnel and quality control issues.

ezColony® Enterprise

ezColony Enterprise includes all standard features of ezColony and addresses critical security and accessibility issues essential to large-scale animal management and breeding:

- ezColony Enterprise provides concurrent real-time secure access of unlimited number of licensed users to unlimited number of animals.
- Data encryption using unbreakable 1024-bit technology and Secure Sockets Layer (SSL) ensure that all data traffic between ezColony web server and a browser remains private and secure.
- Option to restrict access to certain facility blocks, rooms, racks, cages, animals or animal data fields.
- Communication module to streamline facility operations.
- User authentication via Active Directory Domain Services (LDAP protocol).

Features	ezColony	ezColony Enterprise
100% web-based application. Install once, access from anywhere.	✓	✓
Graphic display of virtual racks and cages with animals	✓	✓
Intuitive workflows	✓	✓
Color identification of animal lines	✓	✓
Unlimited number of user-defined fields for animals, cages and protocols.	✓	✓
No limits of the number of genotypes per animal	✓	✓
Animal virtual breeding	✓	✓
Pedigree trees displays	✓	✓
Full audit trail	✓	✓
Various Ear Notch schemas	✓	✓
Animal Pick Lists	✓	✓
Custom Cage Types	✓	✓
Cage card printing	✓	✓
Data import, export, update	✓	✓
Reports (in HTML, text, PDF or CSV formats)	✓	✓
Live search and query builder	✓	✓
Colony Alerts and Restrictions	✓	✓
Mobile devices support	✓	✓
User roles	✓	✓
User Groups		✓
Different levels of access to facility blocks, rooms and racks, as well as relevant information		✓
Inter-facility communication module		✓
Data encryption using 1024-bit technology and Secure Sockets Layer (SSL)		✓
User authentication via Active Directory Domain Services (LDAP)		✓
Support for external databases (PostgreSQL, MySQL, Oracle, Microsoft SQL Server)		✓
Application Programming Interface (API)		✓
Hyper-V support on Microsoft Windows Server		✓

Corporate Headquarters

RURO Incorporated
321 Ballenger Center Dr.
Suite 102
Frederick, Maryland 21703

Sales and general inquiries

Email: sales@ruro.com
Phone: 1-888-881-RURO (1-888-881-7876)
Fax: 1-888-755-8536